

La Villita 6 and 7, Project 14-22

Pre-treatment Monitoring Report

2015



Prepared by Kathryn R Mahan, Ecological Monitoring Specialist, New Mexico Forest and Watershed Restoration Institute for the Greater Rio Grande Watershed Alliance



East Rio Arriba SWCD

Contents

Acronyms and Abbreviations	3
Purpose of Report	4
Ecological Context of Bosque Restoration	4
Monitoring and Field Methods	5
Low intensity Field Methods	5
Estimating Vegetation Cover using LIDAR and eCognition Software	6
Personnel Involved.....	7
La Villita 6 & 7 Project	7
Project Description & Goals	7
Monitoring Results.....	9
Discussion.....	13
References	14
Appendix I – Photopoints.....	15
Appendix II – Photos	16
Appendix IV – Monitoring Methods Available	21
Appendix V - Modified Hink and Ohmart categories, from NMRAM	22

Acronyms and Abbreviations

Acronym, Abbreviation, or Term	Explanation or Definition as used by NMFWR I
AGL	above ground level; GIS term
BBIRD plots	Breeding Biology Research and Monitoring Database, larger circular plot types
BEMP plots	Bosque Ecosystem Monitoring Program, small rectangular plot types
FEAT	Fire Ecology Assessment Tool
FFI	FEAT/ FIREMON Integrated
FIREMON	Fire Effects Monitoring and Inventory System
FSA	Farm Service Agency, a department of the USDA
GIS	Geographic Information Systems
GRGWA	Greater Rio Grande Watershed Alliance
LIDAR	Light detecting and ranging, a remote sensing technique using light to gather elevation data
MRCGD	Middle Rio Grande Conservancy District
NAIP	National Agriculture Imagery Program (aerial imagery)
NDVI	Normalized Difference Vegetation Index; GIS term for a band ratio of the visible red and the near infrared spectral bands and is calculated using the following formula: $(NIR - Red)/(NIR + Red)$
NHNM	Natural Heritage New Mexico
NMDGF	New Mexico Department of Game and Fish
NMED SWQB	New Mexico Environment Department Surface Water Quality Bureau
NMFWR I	New Mexico Forest and Watershed Restoration Institute
NMHU	New Mexico Highlands University
NMRAM	New Mexico Rapid Assessment Method, version 2.0
NRCS	Natural Resource Conservation Service
PC	Plot center
RGIS	Resource Geographic Information System
SWCD	Soil and Water Conservation District
TIFF	Tagged image file format
USDA	United States Department of Agriculture
USGS	United States Geological Survey
VSWCD	Valencia Soil and Water Conservation District
WQCC	Water Quality Control Commission
WSS	Web Soil Survey, a soils database of the NRCS

Purpose of Report

This report covers the low-intensity pre-treatment vegetation monitoring assessment performed on a non-native phreatophyte removal project submitted for the Rio Grande to the Greater Rio Grande Watershed Alliance. Following an explanation of monitoring methods, we will discuss background, observations, and assessment results for each project.

Ecological Context of Bosque Restoration

Neither the challenges nor the importance of working in the bosque and other riparian areas in New Mexico today should be underestimated. According to the New Mexico Department of Game and Fish Conservation Division, wetlands and riparian areas comprise approximately 0.6 percent of all land in New Mexico (2012). Despite this small percentage, estimates of New Mexican vertebrate species depending on wetland and riparian habitat for their survival ranges from 55% (New Mexico Department of Game and Fish Conservation Services Division, 2012) to 80% (Audubon New Mexico, 2013). These areas also provide flood mitigation, filtration of sediment and pollutants, and water for a variety of purposes including groundwater recharge (Audubon New Mexico, 2013). In addition, native vegetation such as cottonwoods have cultural significance to many communities.

As much as these areas are disproportionately important to ecosystems and human communities, they are equally disproportionately impacted by disturbance. Anthropogenic impacts with major consequences for our riparian areas include dams, reservoirs, levees, channelization, acequias and ditches, jetty jacks, riprap and Gabion baskets, urbanization, removal of native phreatophytes, grazing by domestic livestock, excessive grazing pressure by native ungulate populations absent natural predation cycles, beaver removal, logging, mining, recreation, transportation, introduction and spread of invasive exotic species, groundwater extraction, altered fire and flood regimes drought and climate change (Committee on Riparian Zone Functioning and Strategies for Management, et al., 2002). Statewide, it is estimated that as much as 90% of New Mexico's historical riparian areas have been lost (Audubon New Mexico, 2013), and approximately 39% of our remaining perennial stream miles are impaired (New Mexico Department of Game and Fish Conservation Services Division, 2012).

New Mexico is fortunate enough to have the Middle Rio Grande Bosque, the largest remaining bosque in the Southwest (USDA USFS, 1996). However, over the past two decades, the number of fires in the bosque has been increasing. Historically, the primary disturbance regime in the bosque has been flooding, not fire, which means the system is not fire-adapted. In fact, native species like cottonwood resprout from their roots after floods and need wet soils to germinate from seed. Flooding also promotes decomposition of organic material and keeps the soil moist which reduces the likelihood of fire. Today, overbank flow is uncommon in many areas of the Rio Grande due to the heavy alteration of the channel and flow regimes (two obvious examples are the structures defining the upper and lower extent of the Middle Rio Grande: Cochiti Dam and Elephant Butte Reservoir). This has led to low fuel moisture content and high fuel loads, as well as increased human presence in the riparian area. As a result, bosque fires are more common and more severe: they kill cottonwoods and other native species, creating spaces which are filled by non-native species such as salt cedar, Russian olive, Siberian elm, and Tree-of-Heaven. We are constantly learning more about how these species can exploit and encourage a riparian fire regime, in addition to many other changes they bring to ecosystems.

Efforts geared toward the removal of these nonnative species can help to reduce fire risk, preserve native vegetation, and be part of a larger effort to restore the bosque and the watershed as a whole to a more natural and functional ecosystem. The Greater Rio Grande Watershed Alliance (GRGWA) has been working on these issues with a variety of collaborating organizations and agencies within the Rio Grande basin for several years. Since 2013, the New Mexico Forest and Watershed Restoration Institute (NMFWRI) has been working with GRGWA and the Claunch-Pinto Soil and Water Conservation District (SWCD) to begin construction of a geodatabase for all of GRGWA's non-native phreatophyte removal projects as well as to perform the formal pre- and post-treatment monitoring, utilizing the field methods explained below as well as LIDAR analysis where appropriate and available.

Monitoring and Field Methods

Low intensity Field Methods

Low intensity pre-treatment vegetation monitoring was done using an adapted version of the biotic portion of the New Mexico Rapid Assessment Method (NMRAM), v 2.0, updating recommendations made in the Field Manual for Greater Rio Grande Watershed Alliance (GRGWA) Riparian Restoration Effectiveness Monitoring and the GRGWA Monitoring Plan, developed by Lightfoot & Stropki of SWCA Environmental Consultants in 2012. (For a brief overview of both low and high intensity monitoring methods used by the NMFWRI on GRGWA projects, please see Appendix III.)

For those not familiar, NMRAM was developed by the New Mexico Environment Department Surface Water Quality Bureau Wetlands Program and Natural Heritage New Mexico as a "cost effective, yet consistent and meaningful tool" (Muldavin, 2011) for wetland ecological condition assessment in terms of anthropogenic disturbance as negatively correlated with quality and functionality. The portions of NMRAM we utilized are Level 2 "semi-quantitative" field measurements taken at less detail than plot level (Muldavin, 2011).

Measurements taken included relative native plant community composition, vegetation horizontal patch structure, vegetation vertical structure, native riparian tree regeneration, and invasive exotic plant species cover. The underlying method for these biotic assessments was a version of the 1984 Hink and Ohmart vertical structure classification system, modified for use in the NMRAM for Montane Riverine Wetlands version 2.0 (see Appendix IV). First, vegetation communities were mapped out by patch (polyon) according to the Hink and Ohmart system. Next, the presence of (state-listed) invasives, wetland species, and the two dominant species in each strata ("tree" >15 ft, "shrub" 4.5-15 ft, and "herbaceous" <4.5 ft) were recorded for each plant community. The native/exotic ratio in each of the patches was scored and weighted based on the percent of the project area each patch comprised. These scores were then combined with the additional biotic metrics of vertical and horizontal diversity, native tree regeneration, and overall (listed) invasive presence. The NMRAM rating system is based, on all levels, on a scale of 1 to 4, where 4 is considered excellent condition, 3 good, 2 fair, and 1 poor.

We also assessed soil surface condition, which is a metric typically included in the abiotic section of the NMRAM, as well as the presence of surface fuels, which is not part of the NMRAM. Unlike the other 6 metrics we used, surface fuels were recorded on a rating scale from 0 to 1.0 where 1.0 is a continuous fuel matrix.

Photopoints were established to capture images where vegetation shifts were observed. Waypoints were marked with a Garmin GPS unit and named sequentially by site. Photos were taken in the direction that most effectively captured the diverse vegetation community(ies). Where appropriate, one waypoint was used for photos taken in multiple directions.

While vegetation polygon maps are typically a product of NMRAM assessments, they are not available in this case due to contractor error. Instead, NMFWR's GIS Specialist used LIDAR to classify vegetation structure.

Estimating Vegetation Cover using LIDAR and eCognition Software

LIDAR, light detecting and ranging, elevation data were used to estimate vegetation height and canopy characteristics a supplement to field monitoring data for some GRGWA pre-treatment project sites, including this one. This analysis is especially useful in large or difficult-to-access areas, but because of the effort involved, analysis with LIDAR and eCognition is not typically performed on small, easily accessible sites. While this area was easily accessible, its use was necessitated by the absence of a field-generated vegetation polygon map.

To perform the analysis, 2012 LIDAR was provided by Bureau of Reclamation (flown in February). One foot 2014 NAIP (National Agriculture Imagery Program) imagery was acquired to get an estimate of vegetation extent. NAIP is a USDA/FSA program to acquire 'leaf on' aerial imagery during the peak growing season. NAIP imagery for New Mexico can be downloaded by Quarter Quadrangle extent in an uncompressed TIFF format via RGIS –Resource Geographic Information System (<http://rgis.unm.edu/>). Note that in this case, burned areas were masked out of the analysis as post-burn LIDAR was not available.

In order to classify vegetation, the LIDAR point cloud was filtered to isolate first returns and then LIDAR elevations were calculated to represent height above ground level (AGL). Next, the AGL point cloud was exported by height categories that correlate with the Hink and Ohmart height classes as modified for use in the NMRAM (2.0). These separate point clouds were then converted into separate digital surface models and exported as GeoTiffs.

Understory vegetation was classified first. Understory vegetation were classified using first returns of LIDAR elevations less than 15ft and 1 foot 2014 4- band ortho-imagery within eCognition.

eCognition software is an object based image classification system that allows for a semi-automated analysis of high resolution images. This approach divides the image into meaningful homogenous regions, known as image objects. These image objects are groups of pixels that are adjacent to each other and are spectrally similar. Once image objects are created, they provide a great deal of information from which an image classification can be developed.

Image segmentation within eCognition was based on elevation surface models. NDVI (Normalized Difference Vegetation Index) from the ortho-imagery was calculated and incorporated as a threshold to determine vegetation from dead or non-vegetative areas. The resulting classifications were combined into one image representing total understory vegetation.

The understory vegetation layer was used as an input in the multiple story community classifications (Types 1 and 2). A digital surface model for all heights above ground was used to classify single-story Communities (Types 5, 6S, 6H, and 7). This classification incorporated height classes as well as NDVI to

identify active vegetation. Once the vegetation was classified by height, the understory vegetation layer was used to identify whether each class had understory vegetation or not and was then classified accordingly.

Personnel Involved

2014/5 New Mexico Forest and Watershed Restoration Institute Monitoring Team:

- Jacob Key, Monitoring Contractor
- Kathryn R Mahan, Ecological Monitoring Specialist

2014/5 New Mexico Forest and Watershed Restoration Institute GIS Team:

- Patti Dappen, GIS Specialist

Other persons contacted:

- Fred Rossbach, Field Coordinator, Greater Rio Grande Watershed Alliance
- Madeline Miller, Valencia Soil and Watershed Conservation District

La Villita 6 & 7 Project

Project Description & Goals

Project 14-22 is located on private land in La Villita, near Española, NM in East Rio Arriba County and was sponsored by the East Rio Arriba Soil and Water Conservation District.

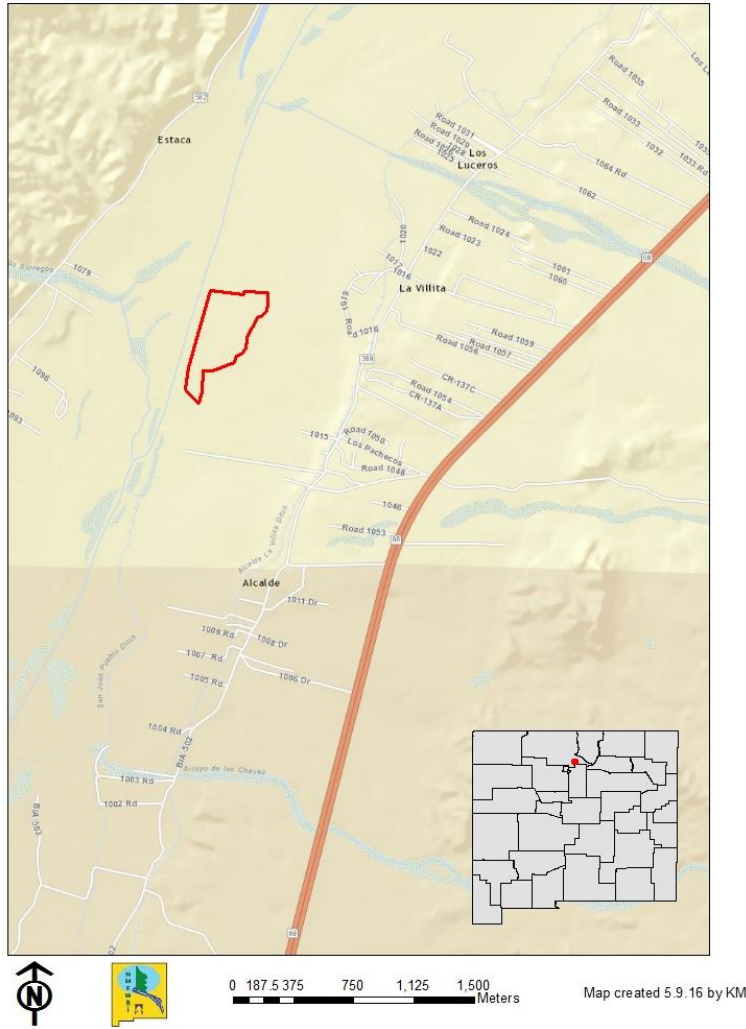
Española receives an average of 9.8 inches of rain annually. Temperatures range from an average high of 91 in July, average low of 15 in January (City-Stats, 2015). According to the USDA NRCS Web Soil Survey, the project is 100% Abiquiu-Peralta complex (loamy fine sand, loamy sand, and clay loam). This site has some components of ecological sites Riverine Riparian (F036XA005NM) and Salt Meadow (R036XB009NM).

The Salt Meadow ecological site typically supports a grassland state dominated by alkali sacaton and inland saltgrass; fourwing saltbush is the dominant shrub. In a deteriorated state, the site supports a plant community dominated by inland saltgrass, seepweed, iodinebush, salt cedar and bare ground. Other common grasses could include saltsedge, foxtail barley, mat muhly, western wheatgrass, nuttall alkaligrass and alkali cordgrass. (Sylvester, 2002)

The Riverine Riparian ecological site is made up of sediments adjacent to perennial streams and vegetation is determined largely by local hydrology. Examples of typical species at different strata include Fremont cottonwood, sandbar willow, Western wheatgrass, and Nebraska sedge (Tunberg).

The project is located between private lands (residences and farm fields) and the Rio Grande in Villita. Some areas within the project had been previously treated by the three landowners, but the majority had not. Initial treatment included removal by extraction and mastication of Siberian elm, Russian olive, salt cedar and mulberry. Some native New Mexico olive was incidentally removed to allow space for heavy equipment movement, although native grasses and yerba mansa were protected. Restoration goals include increasing wildlife forage, promoting natural hydraulic processes and promoting ecosystem function and health.]

14-22 La Villita 6 & 7 Project



14-22 La Villita 6 & 7 Project

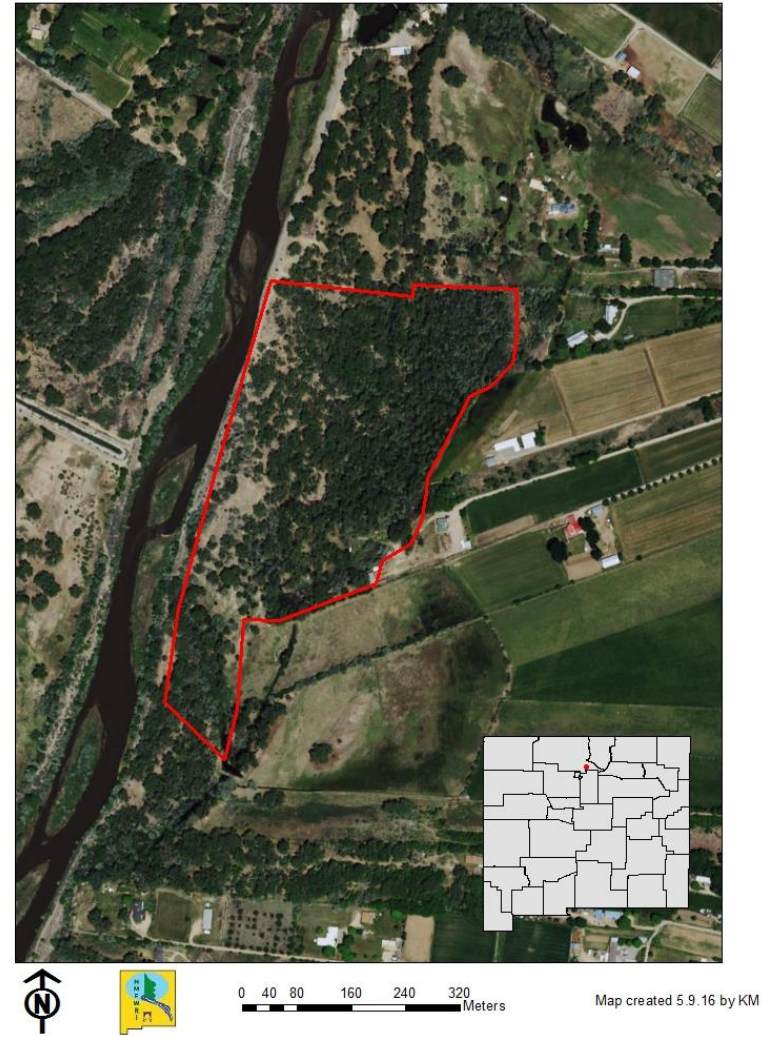


Figure 1. 14-22 La Villita in geographic context

Monitoring Results

Monitoring was conducted at this 28.3-acre project site on January 6, 2015 as part of a restoration project targeting non-native phreatophytes scheduled for 2014-2015. Treatment was completed by the end January 2015, and re-treatment of Russian olive seedlings and other resprouts occurred in October 2015. Post-treatment monitoring has not yet been conducted, however, Google imagery is available for October 2013 (pre-treatment) and November 2015 (post-treatment).



Figure 2. 14-22 La Villita pre- and post-treatment monitoring.

14-22 La Villita with Photopoints

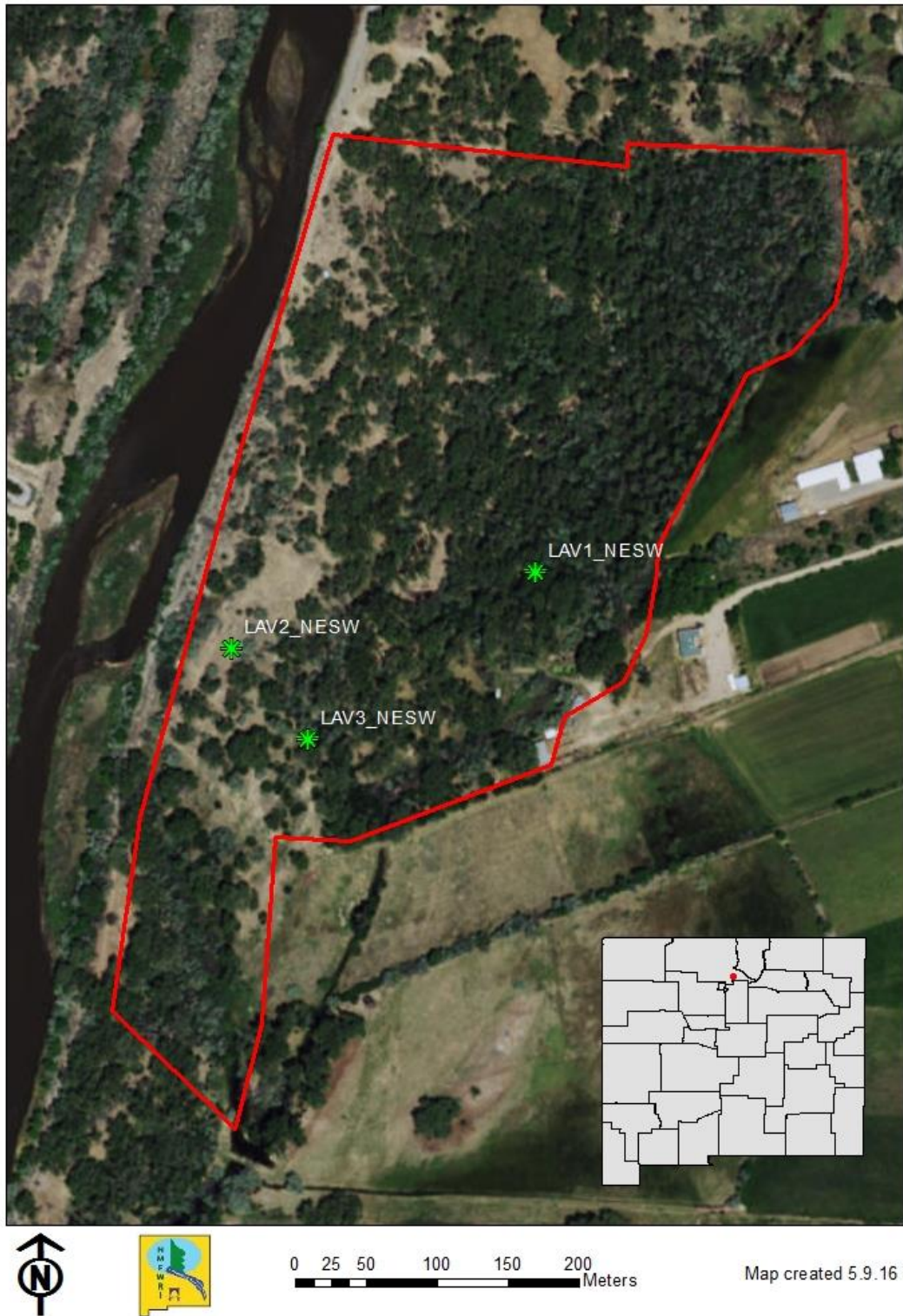


Figure 3. 14-22 La Villita with photopoints.

Results are as follows:

Metric 14-22 pre 6 Jan 2015	Score
Relative Native Plant Community Composition	2
Vegetation Horizontal Patch Structure	3
Vegetation Vertical Structure	4
Native Riparian Tree Regeneration	3
Exotic Invasive Plant Species Cover	1
Project Biotic Score (based on above ratings)	2.5
Project Biotic Rating	B/C Fair/Good
Soil Surface Condition	3
Surface Fuels	0.75

The lowest scores for the project (28.3 acres) came from the high percentage of invasive plants (e.g. Russian olive). The project scored well in the other metrics indicating a diversity of structure types, patch types.

Based on the GIS classification (see Figure 4), the site fell into the following vertical structural classes: 66% was Type 1 High Structure with Understory (on this site, cottonwood, Russian olive, Siberian elm with Russian olive, salt cedar and New Mexico olive understory); 13% Type 2 Low Structure with no Understory (cottonwood, Russian olive, Siberian elm without understory), 3.5% Type 5 Tall Shrub Stands (salt cedar or Russian olive seedlings), 3.9% Type 6H Herbaceous (yerba mansa, grasses, weedy species), and 11% Type 7 Bare Ground.

The project scored highest in the vertical structure metric, likely due to the high proportion of Type 1 forest. Surface fuels were high before treatment due to the density of vegetation which provided litter, duff, and down woody debris. Overall, this site scored a 2.5 out of 4, which is the borderline between a "B" and a "C," or a "Good" and "Fair" biotic rating.

14.22 La Villita Vertical Structure Classification

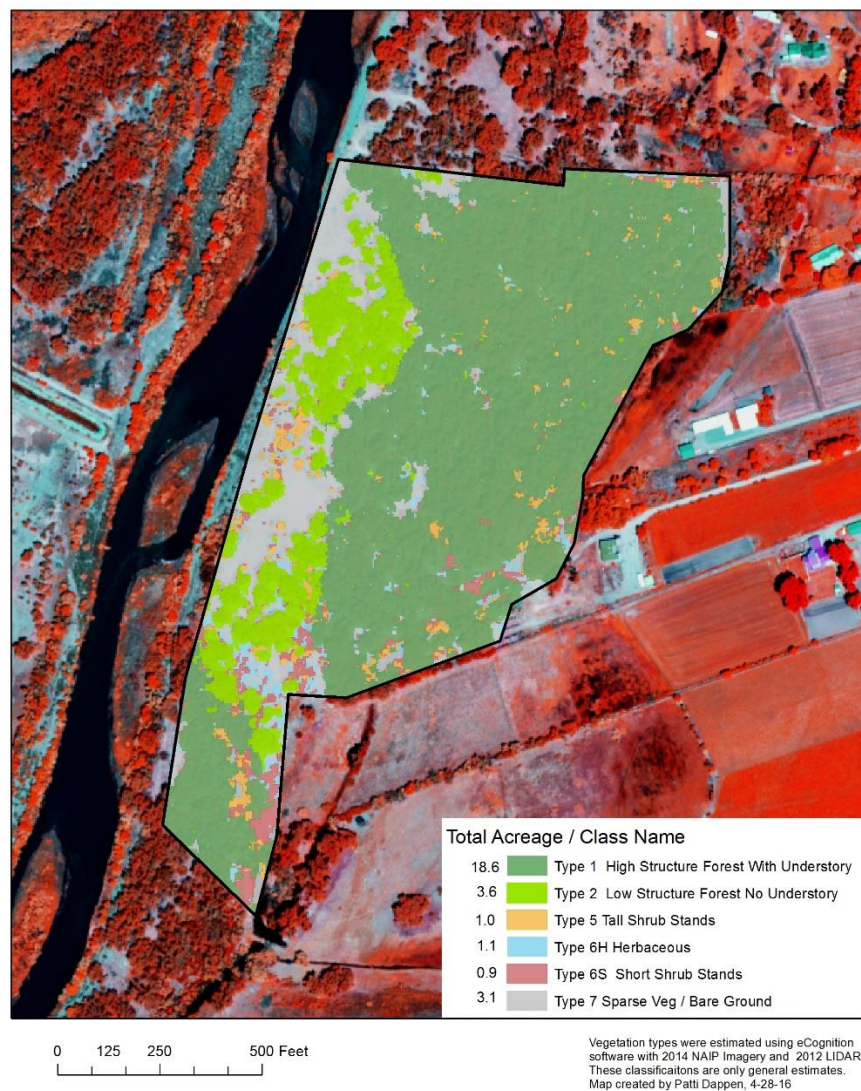


Figure 4. 14-22 La Villita LIDAR and NAIP classification. The map was produced with false-color NAIP imagery to allow the viewer to more easily distinguish between the vegetation and the green color of the Type 1 and Type 2 classifications.

Discussion

We would like to clarify that we are adapting these NMRAM metrics for our own purposes. That is, we are using them both inside and outside their intended site ranges, including on larger sites (NMRAM is designed to handle a site around 100 x 200 meters), sites further from the river (NMRAM is currently in use primarily for assessing riverine wetlands), and sites defined by exotic vegetation presence rather than hydrologic boundaries and upland vegetation indicators/apparent wetland extent. Site delineation and size is likely to be variable for a number of other reasons, including landowner participation, available funds, proposals received from contractors, etc – many of which cannot be directly correlated to site disturbance or ecological function. For this reason, we do not use the entire NMRAM assessment, or place confidence in the weighted score roll-ups that are typically part of an NMRAM report. Should one be interested, rationale for the weighting in the NMRAM score roll-up can be found in the yet-to-be-published field manual for version 2.0. For more information, contact Maryann McGraw of the NMED or NMFWR.

While we provide a biotic site score and rating for your reference, we recommend comparisons be done with individual metrics from pre-treatment and post-treatment assessment from the same site, rather than across multiple sites. Also of note is that statistical analysis is not appropriate for NMRAM, or other low intensity, rapid field methods.

Please note that should the project area change significantly from what was originally proposed and monitored, all metrics will lose some amount of confidence on comparison as it is impractical to re-examine the original site assessment scores using new boundaries. This is an issue of concern of which GRGWA should be aware. We recommend that GRGWA attempt to minimize alterations in project boundaries once pre-treatment monitoring data has been approved for collection. Another, somewhat alternative, recommendation is that the initial monitoring regime include high-intensity modified BEMP-type plots which could be repeated in their exact initial locations, allowing collection of comparable data regardless of boundary change. We recognize that this is not always practical: boundaries change for a number of reasons and time and cost constraints can necessitate the sole use of a rapid assessment method for monitoring. We have reason to hope our outlined assessment method will still be a satisfactory indicator for site function improvement or degradation primarily because metrics in rapid assessment methods such as this are set up to have relatively low sensitivities (i.e. for a change to be reflected in the metrics, either positive or negative, disturbance on site has to be significantly altered).

From here on out, the goal of GRGWA/ NMFWR is that all sites will be revisited for post-treatment monitoring in 5-year intervals. It is our intention and expectation that the data collected in these intervals will reflect any significant changes in disturbance and ecological function of the site.

References

- Audubon New Mexico. (2013). *Water Matters: Water for New Mexico Rivers*. Albuquerque, New Mexico: Utton Transboundary Resources Center.
- Brown, J. K. (1974). *Handbook for Inventorying Downed Woody Material*, USDA Forest Service General Technical report INT-16. *Handbook for Inventorying Downed Woody Material*. Ogden, Utah: USDA Forest Service Intermountain Forest and Range Experiment Station.
- City-Stats. (2015). *Española (New Mexico) Climate*. Retrieved from City-Stats.org: <http://city-stats.org/nm/espanola/climate/espanola-climate-data>
- Claunch-Pinto Soil and Water Conservation District on behalf of The Greater Rio Grande Watershed Alliance. (2014, September 3). *Request for Proposals for Greater Rio Grande Watershed Alliance Riparian Restoration Projects*. Mountainair, New Mexico.
- Claunch-Pinto Soil and Water Conservation District on behalf of the Greater Rio Grande Watershed Alliance. (2015). *Request for Proposals for Greater Rio Grande Watershed Alliance Riparian Restoration Projects*. Mountainair, NM: Claunch-Pinto Soil and Water Conservation District.
- Committee on Riparian Zone Functioning and Strategies for Management, et al. (2002). *Riparian Areas: Functions and Strategies for Management*. Washington, D.C.: National Academy Press.
- Lightfoot, D. &. (2012). *Greater Rio Grande Watershed Alliance Riparian Restoration Effectiveness Monitoring Plan*. Albuquerque, NM: SWCA Environmental Consultants.
- Lightfoot, David & Stropki, C. (2012). *Field Manual for Greater Rio Grande Watershed Alliance Riparian Restoration Effectiveness Monitoring*. Albuquerque, NM: SWCA Environmental Consultants.
- Muldavin, E. B. (2011). *New Mexico Rapid Assessment Method: Montaine Riverine Wetlands*. Version 1.1. Final report to the New Mexico Environment Department, Surface Water Quality Bureau. 90 pp. and appendices.
- National Cooperative Soil Survey. (2015, November). *Abiquiu Series*. Retrieved from USDA-NRCS Official Soil Series Descriptions: https://soilseries.sc.egov.usda.gov/OSD_Docs/A/ABIQUIU.html
- New Mexico Department of Game and Fish Conservation Services Division. (2012). *Bridge and Road Construction/Reconstruction Guidelines for Wetland and Riparian Areas*.
- Sylvester, D. (2002). *Ecological Site Characteristics - Salt Meadow*. Retrieved from http://www.nrcs.usda.gov/Internet/FSE_DOCUMENTS/nrcs144p2_067086.pdf
- Tunberg, J. (n.d.). *Ecological Site Characteristics: Riverine Riparian*. Retrieved from USDA NRCS Ecological Site Description: <https://esis.sc.egov.usda.gov/ESDReport/fsReport.aspx?approved=yes&rptLevel=all&id=F036XA005NM>
- USDA NRCS. (2013, December 6). *Web Soil Survey*. Retrieved from <http://websoilsurvey.sc.egov.usda.gov/App/HomePage.htm>
- USDA NRCS. (2015, September 24). *Ecological Site Description*. Retrieved from USDA NRCS Ecological Site Information System: <https://esis.sc.egov.usda.gov/Welcomes/pgReportLocation.aspx?type=ESD>
- USDA USFS. (1996, September). *Ecology, Diversity, and Sustainability of the Middle Rio Grande Basin*, RM-GTR-268. (D. M. Finch, & J. A. Tainter, Eds.) Fort Collins, Colorado.

Appendix I – Photopoints

Project Name	Point number in NMFWR/Garmin	Direction facing (azimuth)	Coordinates
14.22 pre	LAV1	N	36.100546662, - 106.058001816
		E	
		S	
		W	
	LAV2	N	36.100153886, - 106.059936779
		E	
		S	
		W	
	LAV3	N	36.09968693, - 106.059446521
		E	
		S	
		W	

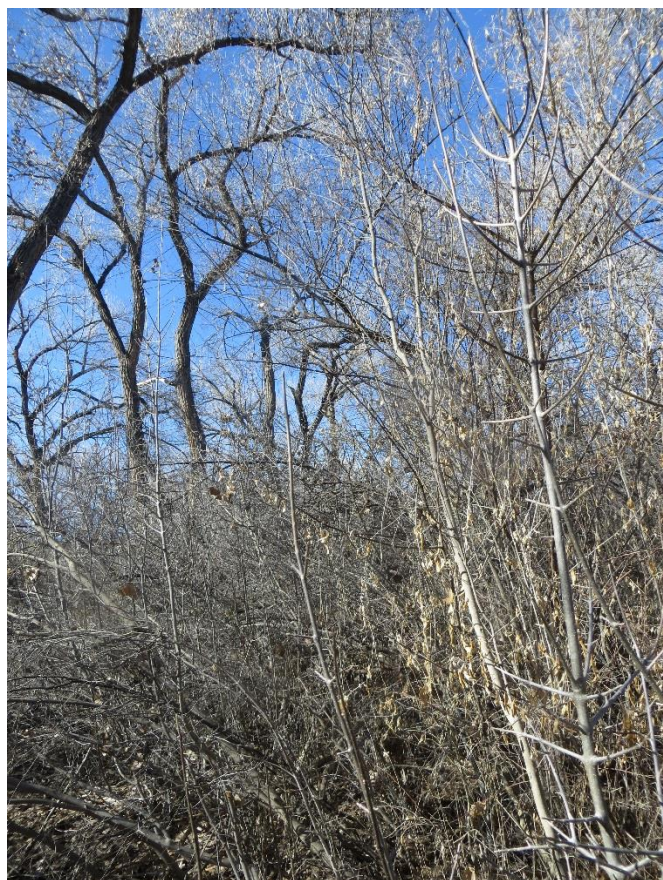
Appendix II – Photos



LAV1, taken facing north.



LAV1, taken facing east.



LAV1, taken facing south.

LAV1, taken facing west.





LAV2, taken facing north.



LAV2, taken facing east.



LAV2, taken facing south.

LAV2, taken facing west.



LAV3, taken facing north.

LAV3, taken facing east.



LAV3, taken facing south.

LAV3, taken facing west.



Appendix IV – Monitoring Methods Available

Low-intensity methods

- Where: happens on all sites with GRGWA projects
- Method name: NMRAM (New Mexico Rapid Assessment Method v 2.0)
- Time required: 3 hours – half day/ site
- Repeat: done once pre-treatment and in 4-5 year intervals post-treatment
- Basics: mapping vegetation communities (by vertical and horizontal structure), recording dominant vegetation in each strata (trees, shrubs, herbaceous), assessing fuel load, noting soil surface condition and native/exotic ratio at all vegetation levels, photo points
- Any on-site impacts or materials: none

High-intensity methods

- Where: happens on select sites, in addition to low-intensity monitoring

Submethod name 1: BBIRD or BEMP vegetation plots (depends on treatment area size)

- Time required: approx. 2 hours/site
- Repeat: both pre-treatment and in 4-5 yr intervals post-treatment
- Basics: larger plots and transects documenting vegetation, photo points
- On-site impacts or materials: rebar and cap

Submethod name 2: Brown's transects

- Time required: 1-1.5 hours/site
- Repeat: both pre-treatment and in 4-5 yr intervals post-treatment
- Basics: transects to calculate fuel loading and fire behavior, photo points
- On-site impacts or materials: rebar and cap

Submethod name 3: BEMP-adapted Groundwater Well Monitoring

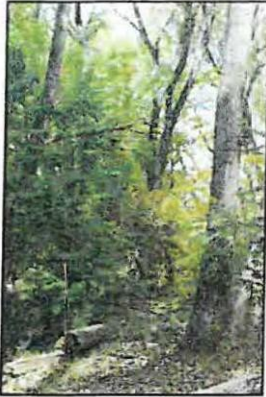
- Time required:
 - Initial installation: 1-2 hours/ well (ideally 2+ wells/site)
 - Repeat: maintenance as needed, should be minimal
 - Data offloading: 10-20 minutes/well
 - Repeat: at least annually (this is when we anticipate datalogger will be full and batteries will need to be changed)
- Basics: install a well with a sensor which records groundwater level and temperature once an hour year round; this will reflect changes due to seasonal variation, vegetation growth, irrigation, etc.
- On-site impacts or materials: shallow monitoring well (consists of capped PVC pipe extending into the ground about 3 feet below the water table and above ground approx. 2 feet (can be painted earth tones); well contains a datalogger (pressure transducer) suspended on a cable into the water); well should be protected from cattle grazing (so may require rebar around pvc visible above ground)

Appendix V - Modified Hink and Ohmart categories, from NMRAM

The following is pages 39-41 in Muldavin et al.'s 2014 NMRAM for Montane Riverine Wetlands v 2.0 Manual (draft, not yet published)

Vegetation Vertical Structure Type Definitions for NMRAM

Multiple-Story Communities (Woodlands/Forests)



Type 1 – High Structure Forest with a well-developed understory.

Tall mature to intermediate-aged trees (>5 m [>15 feet]) with canopy covering >25% of the area of the community (polygon) and understory layer (0-5 m [0-15 feet]) covering >25% of the area of the community (polygon). Substantial foliage is in all height layers. (This type incorporates Hink and Ohmart structure types 1 and 3.) Photograph on Gila River by Y. Chauvin, 2012.



Type 2 – Low Structure Forest with little or no understory.

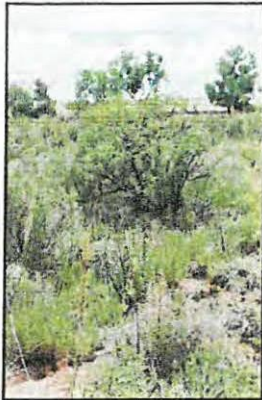
Tall mature to intermediate-aged trees (>5 m [>15 feet]) with canopy covering >25% of the area of the community (polygon) and understory layer (1-5 m [3-15 feet]) covering <25% of the area of the community (polygon). Majority of foliage is over 5 m (15 feet) above the ground. (This type incorporates Hink and Ohmart structure types 2 and 4.) Photograph on Diamond Creek by Y. Chauvin, 2012.

Single-story Communities (Shrublands, Herbaceous and Bare Ground)



Type 5 – Tall Shrub Stands.

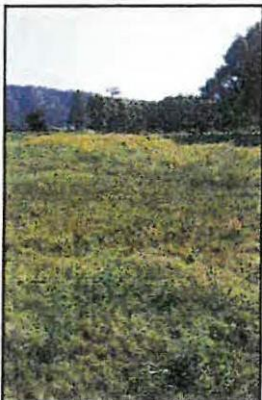
Young tree and shrub layer only (15-5 m [4.5-15 feet]) covering >25% of the area of the community (polygon). Stands dominated by tall shrubs and young trees, may include herbaceous vegetation underneath the woody vegetation. Photograph on San Francisco River by Y. Chauvin, 2012.

**Type 6S-Short Shrub Stands.**

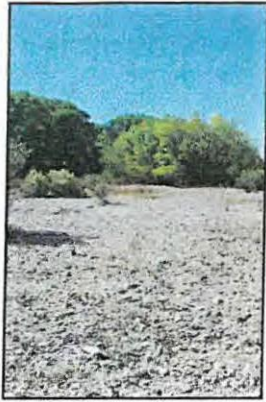
Short stature shrubs or very young shrubs and trees (up to 1.5 m [up to 4.5 feet]) covering >10% of the area of the community (polygon). Stands dominated by short woody vegetation, may include herbaceous vegetation underneath the woody vegetation. Photograph on Lower Pecos River by E. Lindahl, 2008.

**Type 6W-Herbaceous Wetland.**

Herbaceous wetland vegetation covering >10% of the area of the community (polygon). Stands dominated by obligate wetland herbaceous species. Woody species absent, or <10% cover. Photograph of *Carex nebrascensis* meadow on upper Rio Santa Barbara by Y. Chauvin, 2009.

**Type 6H-Herbaceous.**

Herbaceous vegetation covering >10% of the area of the community (polygon). Stands dominated by herbaceous vegetation of any type except obligate wetland species. Woody species absent or <10% cover. Photograph on Diamond Creek by Y. Chauvin, 2012.



Type 7-Sparse Vegetation/Bare Ground.

Bare ground, may include sparse woody or herbaceous vegetation, but total vegetation cover <10%. May be natural in origin (cobble bars) or anthropogenic in origin (graded or plowed earth) Photograph on Lower Gila River by Y. Chauvin,2012.