

# 5-year Photo Comparisons for Willie Chavez, 2 plots

VSWCD: Willie Chavez

2011/2012 photos: taken January 13, 2012 by Joe Zebrowski, NMFWR

2016/2017 photos: taken Nov 6, 2016 by Kathryn Mahan, NMFWR

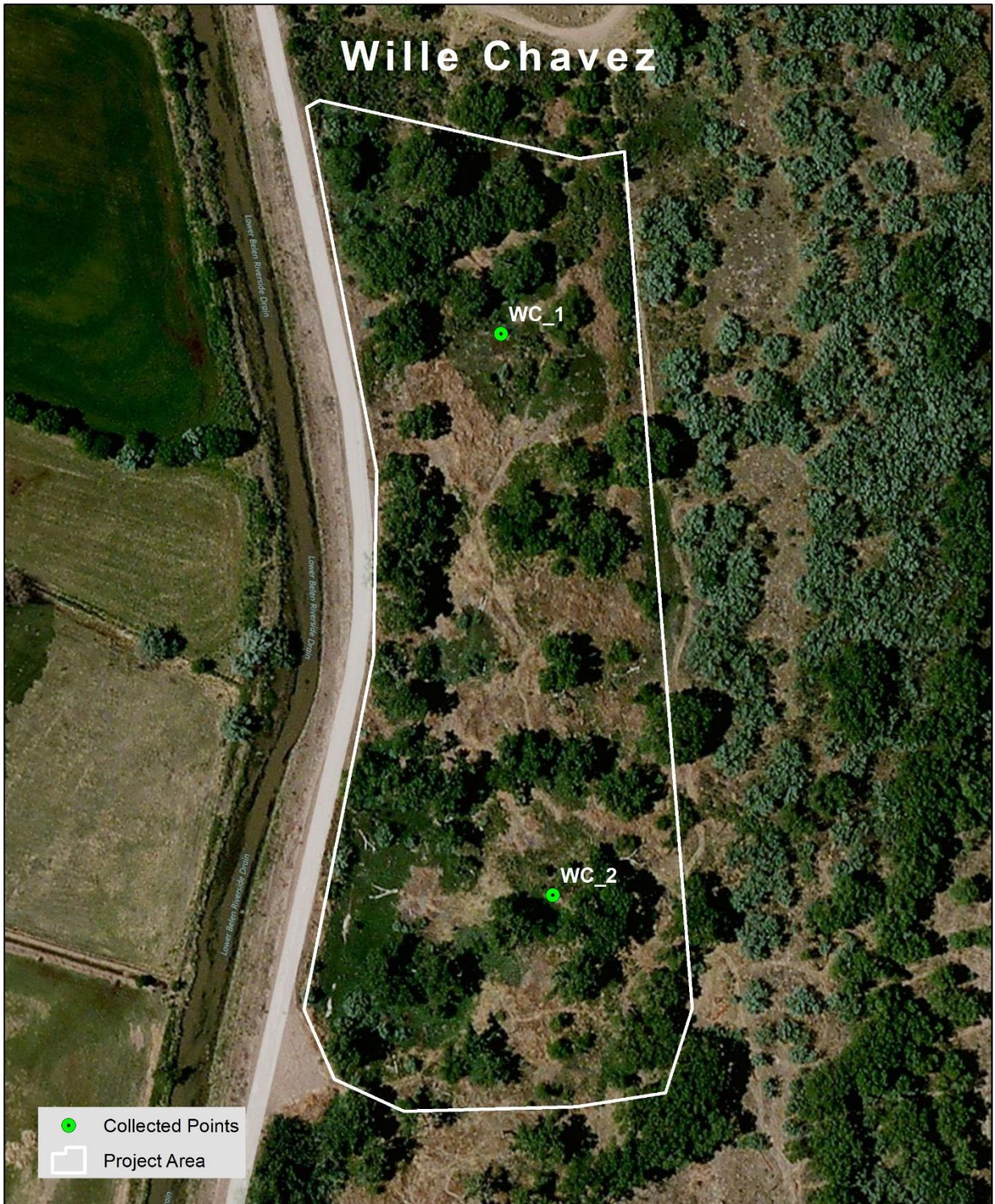
Contact:

Kathryn Mahan, Ecological Monitoring Specialist, NMFWR

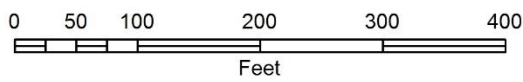
Office: 505.426.217

Cell: 620.288.0333

Email: [krmahan@nmhu.edu](mailto:krmahan@nmhu.edu)



Source:  
Points: NMFWR, January 2012.  
Boundary: NMSF, Oct 2011.  
Base Map: ESRI. (c) 2010 Microsoft  
Corporation and its data suppliers





WC\_1C, facing center from as close to 66 feet as visually possible (2012 above, 2016 below)





WC\_1N, facing north from center (2012 above, 2016 below)





WC\_1E, facing east from plot center (2012 above, 2016 below)





WC\_1S, facing south from center (2012 above, 2016 below)





WC\_1W, facing west from center (2012 above, 2016 below)





WC\_2C, facing center from as close to 66 feet as visually possible (2012 above, 2016 below)







WC\_2N, facing north from plot center (2012 above, 2016 below)





WC\_2E, facing east from center (2012 above, 2016 below)





WC\_2S, facing south from plot center (2012 above, 2016 below)





WC\_2W, facing west from center (2012 above, 2016 below)

