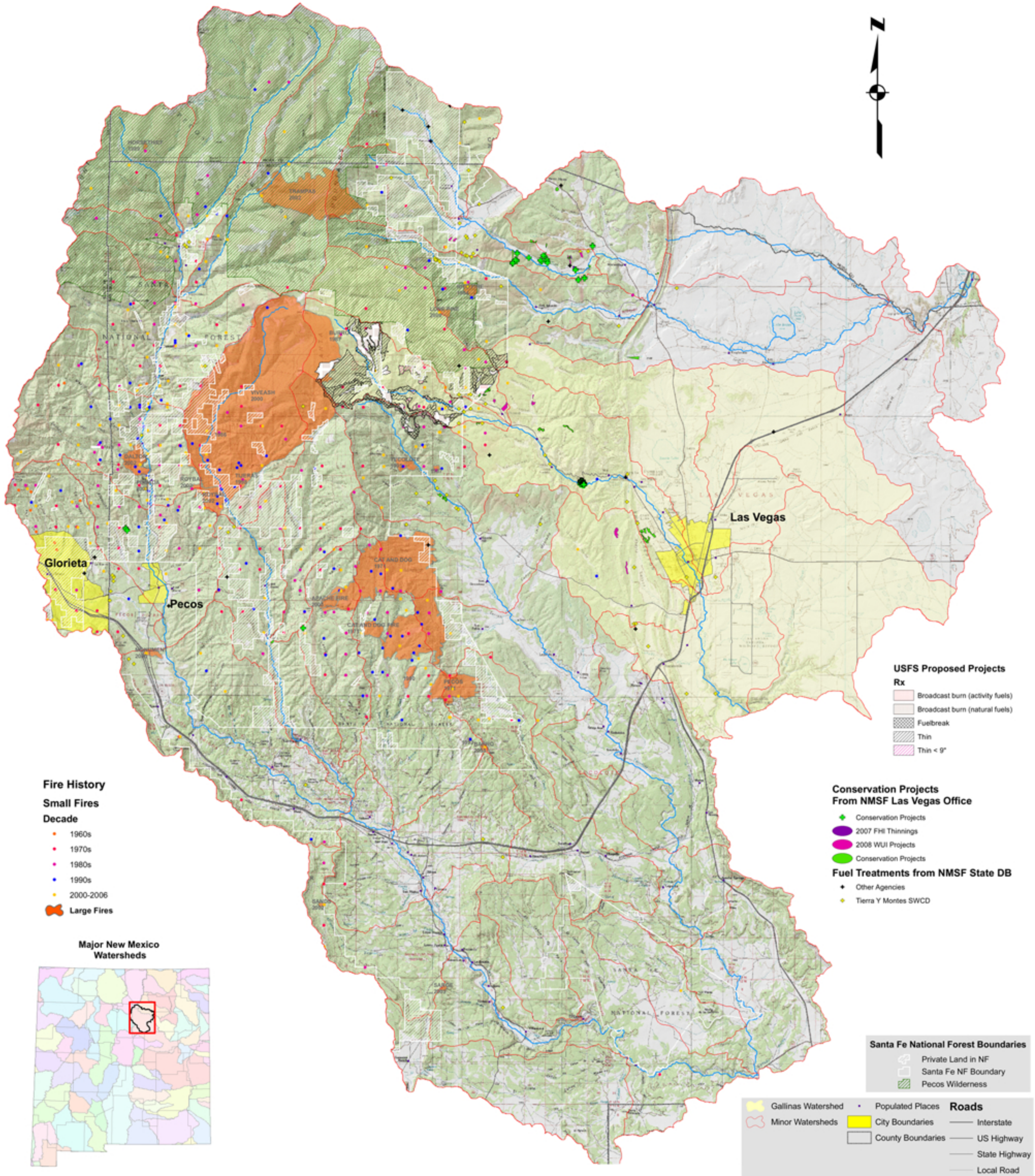
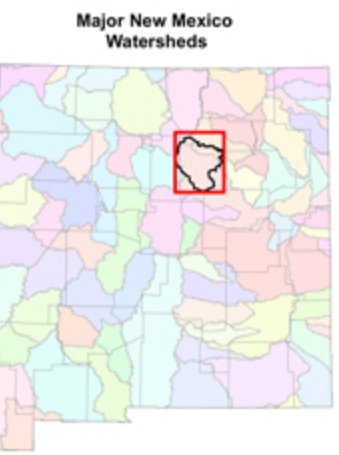


Forest and Watershed Conservation Projects Western San Miguel County New Mexico



- Fire History**
- Small Fires**
- Decade**
- 1960s
 - 1970s
 - 1980s
 - 1990s
 - 2000-2006
- Large Fires



- USFS Proposed Projects**
- Rx**
- Broadcast burn (activity fuels)
 - Broadcast burn (natural fuels)
 - Fuelbreak
 - Thin
 - Thin < 9"

- Conservation Projects From NMSF Las Vegas Office**
- ◆ Conservation Projects
 - ◆ 2007 FHI Thinnings
 - ◆ 2008 WUI Projects
 - ◆ Conservation Projects

- Fuel Treatments from NMSF State DB**
- ◆ Other Agencies
 - ◆ Tierra Y Montes SWCD

- Santa Fe National Forest Boundaries**
- Private Land in NF
 - Santa Fe NF Boundary
 - Pecos Wilderness

- Watersheds**
- Gallinas Watershed
 - Minor Watersheds
- Populated Places**
- City Boundaries
 - County Boundaries
- Roads**
- Interstate
 - US Highway
 - State Highway
 - Local Road

1:100,000



Source:
Conservation Treatments: New Mexico State Forestry, July 2008
Fire data: USFS Santa Fe National Forest, August 2007
Forest Boundaries: USFS Southeast Region, December 2007
Base layer: NM Resource Geographic Information System, various dates

