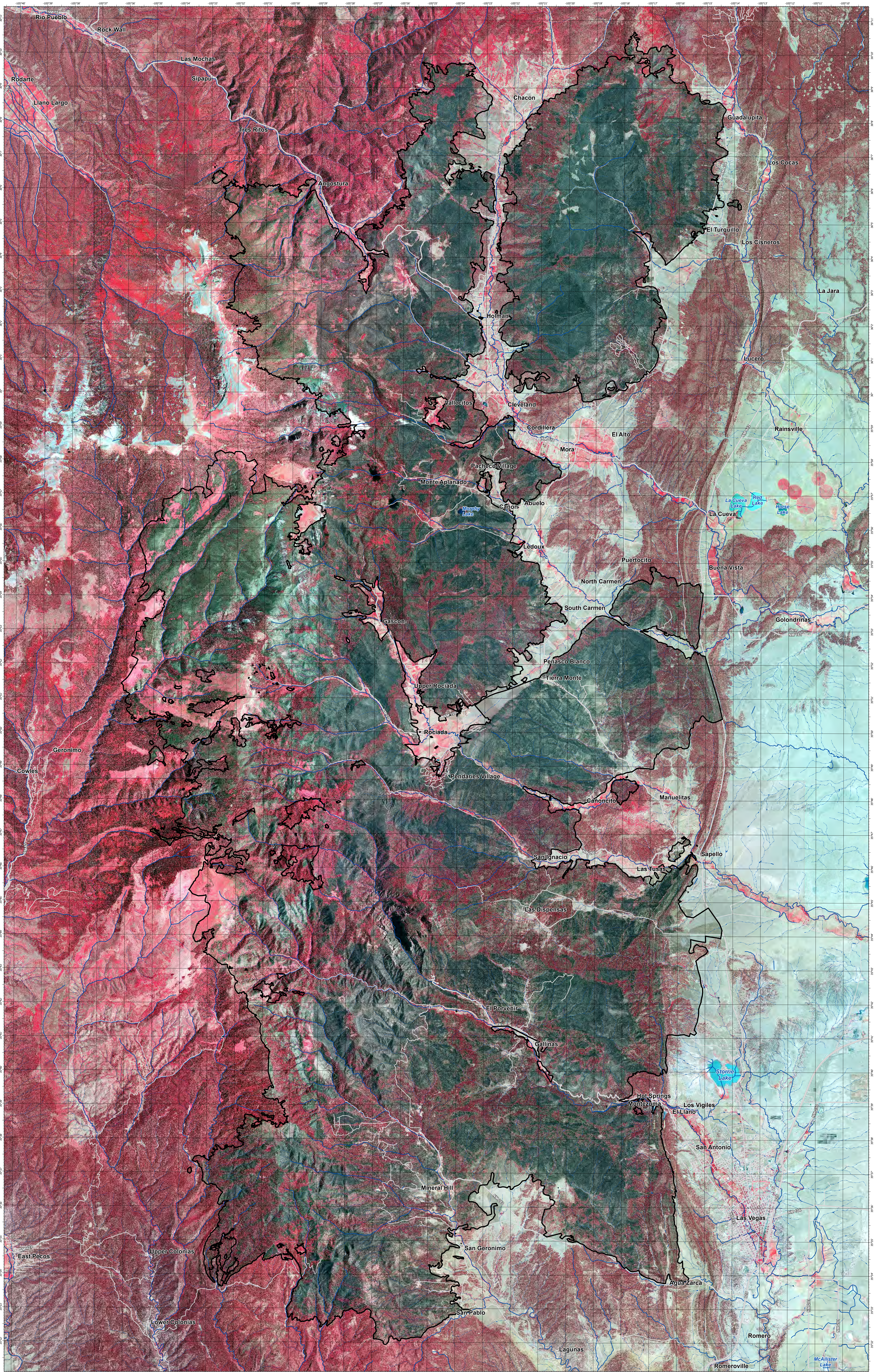


# Hermit's Peak/Calf Canyon Fire

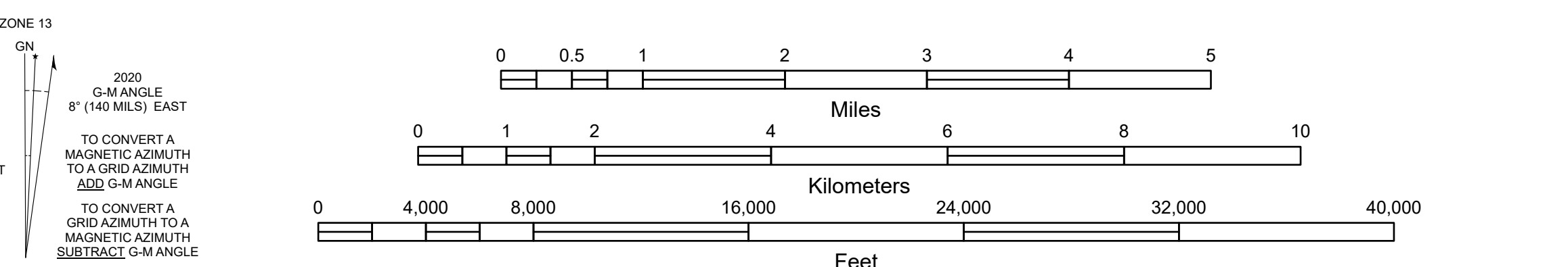
April - August 2022

This map is presented in **color infrared** which is often used for interpretation of natural resources. In color infrared imagery, healthy and dense vegetation is seen in bright red, less dense and healthy vegetation is seen in lighter reds and pinks, and dead vegetation is seen in darker greens. Using this type of imagery better shows the burn scar (outlined in a thick black line) and the devastation caused by the Hermit's Peak/Calf Canyon fire on the forests of Northern New Mexico.



Fire Boundary: NIFC WFIGS Interagency Fire Perimeters, 2023  
Roads: NM DOT and San Miguel County, 2022  
Hydrography: U. S. Geological Survey, 2022  
Imagery: NAIP (2022)

Coordinate System: NAD 1983 UTM Zone 13N  
Projection: Transverse Mercator  
Datum: North American 1983



This map is not a legal document. Boundaries may be generalized for this map scale. Private lands within government reservations may not be shown. Obtain permission before entering private lands.

No warranty is made by New Mexico Highlands University (NMHU) as to the accuracy, reliability, or timeliness of these data for individual use or aggregate use with other data, or for purposes not intended by NMHU. Conclusions drawn from this information are the responsibility of the user. NMHU assumes no responsibility in the event that any information is incorrect. NMHU assumes no liability for damages, incurred directly or indirectly as a result of incomplete, incorrect or omitted information. This information may be updated without notification.

