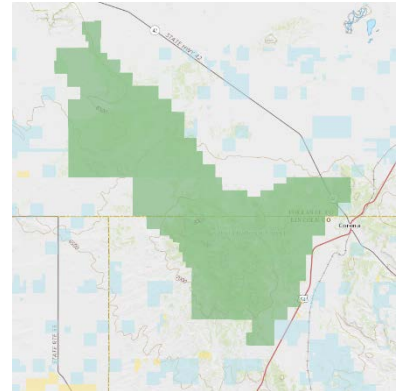


Mountainair Collaboration Landscape Values to Protect and to Promote

Gallinas Mountains Area

Specific Places

- Recreation: Gallinas group site, Red Cloud Campground
- Range: Antelope, Cougar Mountain/Corona, Bonito, Dubois, Pueblo Blanco, Pueblo Colorado, Osborne, and Brown Allotments, tanks, Hwy 42 fence,
- Wildlife: Goshawk Pre-Fledgling Area (PFA), trick tanks
- Timber: Gallinas (Corona) Collaborative Forest Restoration Project (CFRP)
- Heritage: prehistoric sites, Pueblo de La Mesa, Pueblo Blanco, Pueblo Colorado Cement Springs (Trough Springs), historic cabin at Gallinas Lookout
- Village of Corona and Corona Ranch Estates
- Hwy 42
- Hwy 54
- Cougar Mountain private,
- Corona municipal supply watershed/well field
- Gallinas Lookout
- Salinas National Monument (Gran Quivira ruins)



Environmental Qualities

- water resources
- viewsheds
- night sky quality
- wetlands
- riparian areas

Economic Qualities

- woodcutting
- livestock economy
- minerals – gravel pits/claims
- recreation
- range
- timber

Social and Cultural Qualities

- private inholdings and homes in close proximity to NF

- community facilities
- private inholdings with occupied residences in NF
- recreation
- heritage
- prehistoric sites

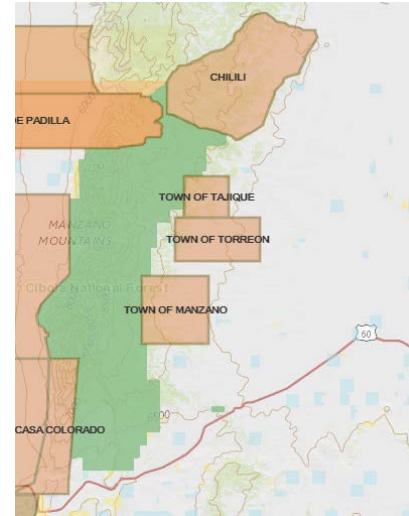
Infrastructure

- communication sites
- gas pipeline
- utility lines
- wind farm

Manzano Mountains Area

Specific Places

- Recreation: Crest Trail, Pine Shadow Trailhead, Salas Trail and Trailhead, Trigo Trail, Commanche Trail and Trailhead, Monte Largo Trail and Trailhead, Kayser Mill Trail and Trailhead, Cottonwood Trail and Trailhead, Ox Canyon Trail and Trailhead, Red Canyon Trail, Spruce Spring Trail and Trailhead, Box Canyon Trail, Trail Canyon Trail and Trailhead, Commanche Trail and Trailhead, Encino Trail and Trailhead, Yellowstone Trail, Bosque Trail and Trailhead, Cerro Blanco Trail and Trailhead, Spring Loop Trail, Crimson Maple Trail, Albuquerque Trail and Trailhead, Mosca Trail
- Red Canyon Campground, New Canyon Campground and Trail, Capilla Peak Campground, Fourth of July Campground and Trail, Tajique Campground
- Range: Barranca, Padilla, Monte Largo/Commanche, Gross Kelly (closed), Encino, Torreon, Tajique and Perro Allotments
- Wildlife: Hawk Watch International Site, Kayser Mill PFA, Ox Canyon PFA, Red Canyon Mexican Spotted Owl Protected Activity Center (MSO PAC), Ox Canyon MSO PAC, Bartolo PFA, New Canyon PFA, bighorn sheep
- Timber: Romero CFRP, Capilla CFRP, Isleta Project, Thunderbird Fuels, Ranger Station Fuels, douglas firs, maples
- Heritage: Salas cabin, CCC camp, Gotera Canyon, New Canyon petroglyphs
- Traditional Cultural Properties: Bosque Peak, Mosca Peak, Douglas fir
- private inholdings with residences
- Manzano Mountain Wilderness
- Community facilities
- Pine Shadow Spring
- BNSF Railroad
- Hwy 55
- Hwy 60
- Hwy 131
- Hwy 337
- FS 422
- FS 275
- FS 245
- FS 253
- Veteran's Parkway



- Ranger Station Road
- Red Bluff Road
- Salinas National Monument (Abo Ruins)
- Salinas National Monument (Quarai Ruins)
- Mountainair
- Thunderbird Subdivision
- Loma Parda (Red Bluff subdivision)
- Punt de Agua
- Deer Park Subdivision
- Sherwood Forest Subdivision
- Nustar Multipurpose Pipeline
- Isleta Pueblo
- Manzano Land Grant
- Tome Land Grant
- Torreon Land Grant
- Tajique Land Grant
- Chilili Land Grant
- Kirtland helicopter landing zone
- Manzano State Park
- McKinley Ranch
- Manzano Spring and Lake
- Unburned watershed
- Chilili watershed
- Capilla Lookout
- Inlow Youth Camp
- Sufi Camp
- 100F Camp
- Whirling Winds Ranch
- Tajique Creek Riparian (Wild and Scenic River candidate)
- Timber: Admin site fuels project
- Mountainair cemetery

Environmental Qualities

- water resources
- wetlands
- viewsheds
- night sky quality
- riparian areas
- wildlife
- landscape integrity

- soils
- water
- habitat
- wilderness
- landscape resiliency

Economic Qualities

- Communication Site and Towers
- wood-cutting
- livestock economy
- range
- timber

Social and Cultural Qualities

- Radio Sheds
- Recreation
- Heritage
- private inholdings with residences
- traditional Cultural Properties
- community facilities
- social well-being
- public access
- local knowledge
- Commons
- Democracy and democratic processes

Infrastructure

- communication site and towers
- utility lines